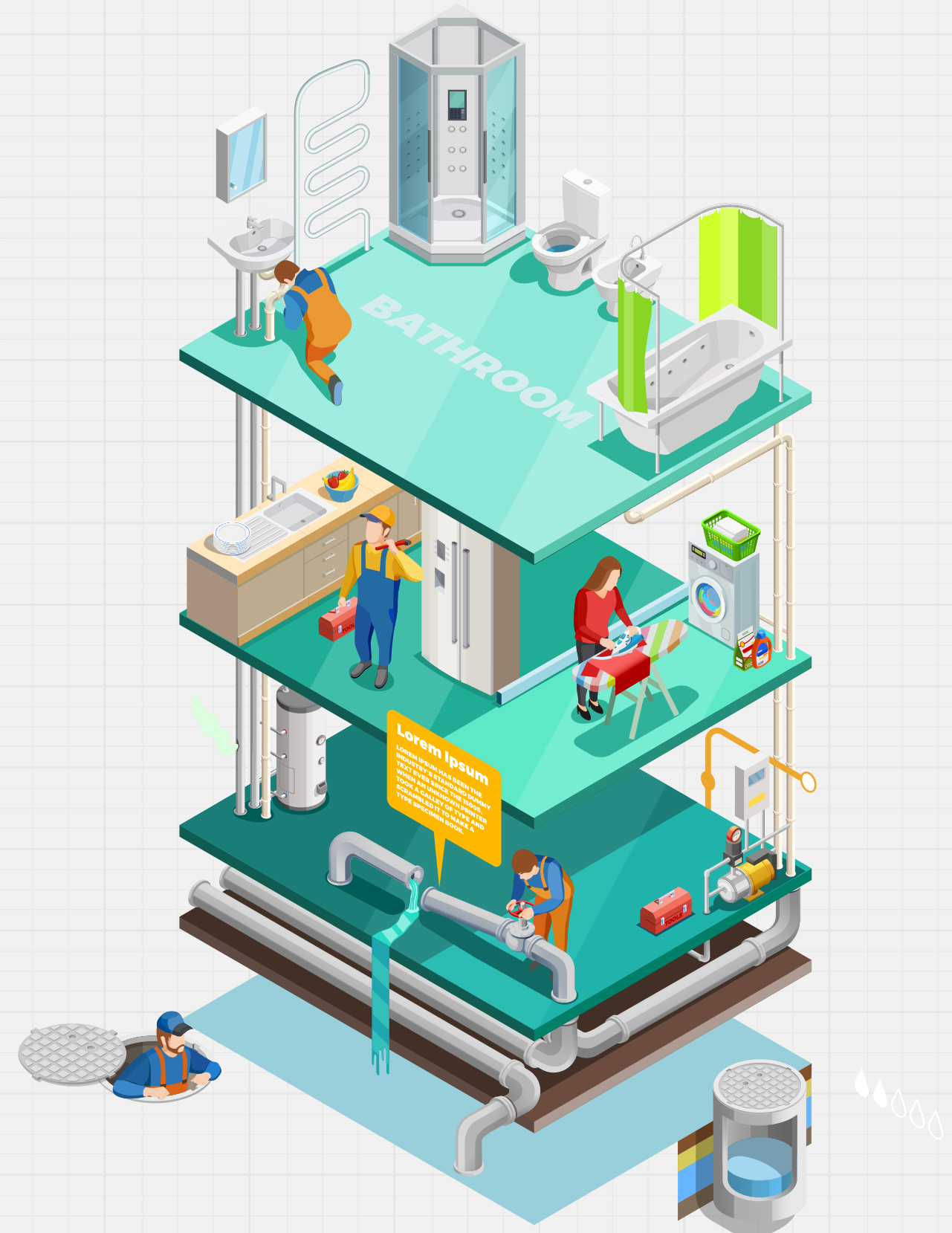
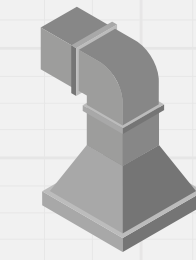


Improving Sustainability of The Buildings Through MEP Design in Construction Projects.

Green Building is a promising and prevailing concept that will soon be applied by project teams in the AEC industry. It helps protect the environment and mitigate its impact on resources, reducing waste and enhancing occupant productivity. High-quality equipment that enhances performance and ensures precise site dimensions is vital for conceptualising green buildings. By reducing consumption of non-renewable resources, reducing waste, and implementing sustainable design practices, we can improve the environment and the occupants' lifestyle.

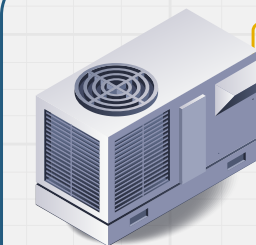


How to Improve Sustainability Through MEP Design of a Constructing a Green Building



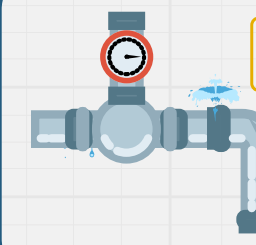
1. CO2 Emissions

- ✓ Carbon dioxide is released from the building, harming HVAC systems and power systems used for daily electrical gear and appliances.
- ✓ Carbon dioxide is used for building construction and maintenance.
- ✓ Sustainable materials reduce waste and reuse content, thereby reducing carbon dioxide emissions. But through building design and plans, we can reduce the amount of carbon dioxide emitted.



2. Energy Efficiency in HVAC and Lightning System

- ✓ The building's configuration system can provide measurements for HVAC and lightning systems, which account for half of the building's energy consumption.
- ✓ Optimise the design to make the system more efficient, reducing environmental impact and lowering costs.
- ✓ Natural ventilation must be used, and energy losses in conventional methods and designs must be minimised to reduce lightning. Effective technology must be used.



3. Water Wastage

- ✓ Water conservation methods and other design strategies can help buildings conserve water and reduce water bills.
- ✓ Installing low-flow fixtures, faucets, and other plumbing reduces water use.
- ✓ Using different types of water systems can **improve water efficiency**.



4. Power Usage

- ✓ Electricity is consumed in a building by lighting, computers, HVAC systems, etc. So by installing solar or wind power, a special system can make it operate and coordinate effectively.
- ✓ More high-quality equipment helps reduce energy consumption and improve efficiency. Maintenance and installation can ensure better functioning of the environment.